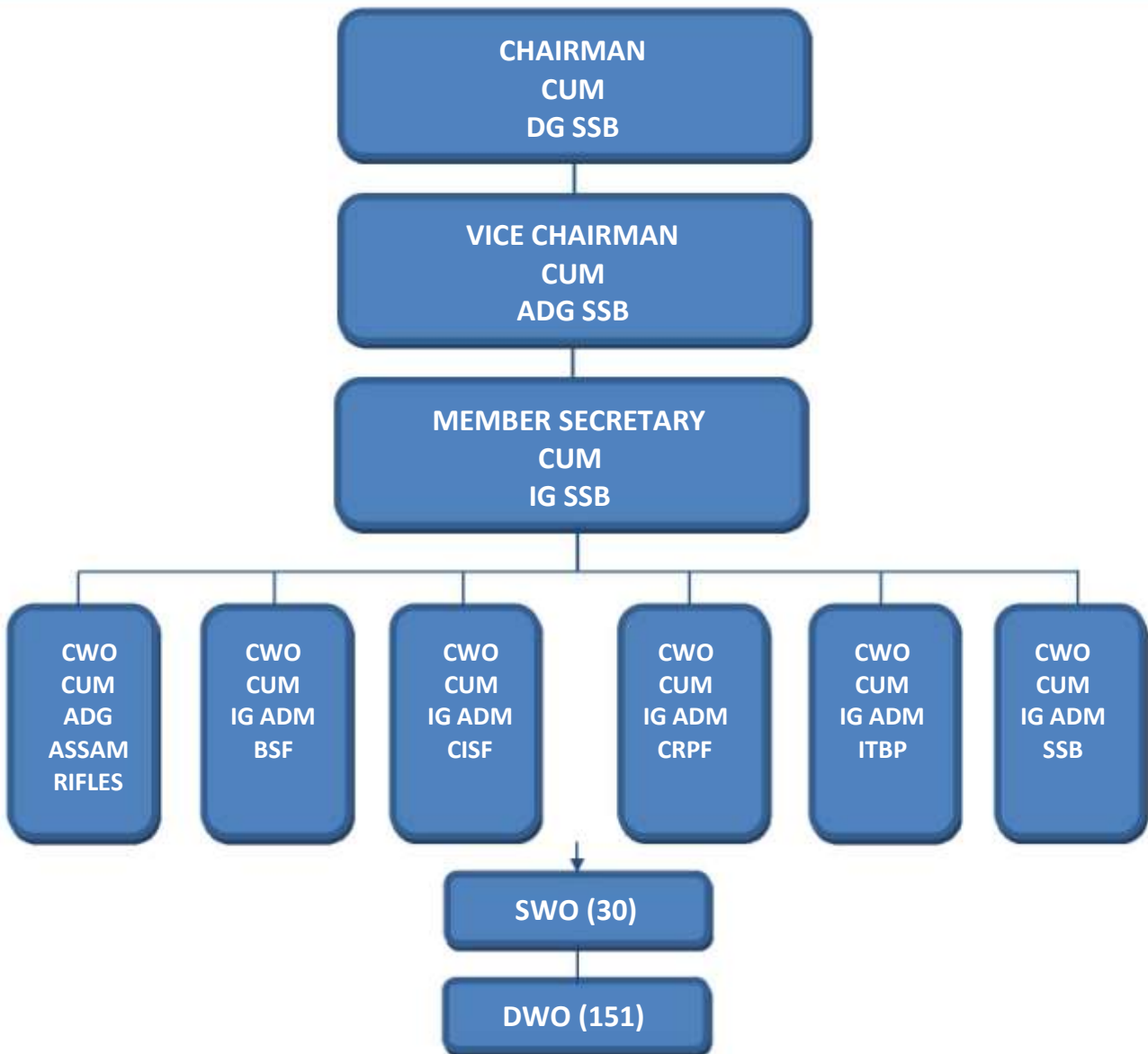




# APEX BODY



## **APEX BODY OF WARB**

|                         |                   |   |
|-------------------------|-------------------|---|
| <b>Chairman</b>         | <b>DG of CAPF</b> | <b>On Rotation Basis among CAPF</b>   |
| <b>Vice-Chairman</b>    | <b>ADG</b>        | <b>Same CAPF as of Chairman</b>   |
| <b>Member Secretary</b> | <b>IG</b>         | <b>Same CAPF as of Chairman</b>   |
| <b>6 Members</b>        | <b>IG(Adm)</b>    | <b>IG(Adm) of AR, BSF, CISF, CRPF, ITBP &amp; SSB as members of Apex Body</b> |

### **Tenure**

- i) The tenure of the Chairman would normally be three years.**
- ii) The Vice Chairman & Member Secretary would be the ADG and IG of same forces with tenure of three years, conterminous with the Chairman.**

### **WARB Central Office Location**

**Room No. 204-205  
“F” Wing, IInd Floor  
Nirman Bhawan  
New Delhi – 110011  
Tel.: 011-23063111  
E-mail: secywarb-mha@nic.in**